

Supplier Guide

Version: V07 / April 2026





“MetroLink is going to
change **everything.**”

Dr. Seán Sweeney - Programme Director



Introduction to MetroLink Supplier Guide

This guide has been developed to provide information and support to prospective suppliers in discovering and accessing opportunities with MetroLink, Ireland's first high-capacity, high-frequency metro system, running 18.8km from Swords to Charlemont, with 16 new stations.

What this guide covers:

- MetroLink overview
- What we are buying
- When we are buying
- How we are buying
- What can you do next
- How to engage with MetroLink





MetroLink Overview

MetroLink is Ireland's first major metro project in nearly a century, designed to tackle Dublin's growing congestion and support the Greater Dublin Area (GDA) transport strategy. It will deliver a high-capacity, high-frequency, and fully automated rail service, running 18.8km from Swords to Charlemont with 16 new stations.

The metro will connect key destinations including Dublin Airport, DCU, the Mater and Rotunda Hospitals, and Trinity College Dublin. It will also integrate seamlessly with Irish Rail, DART, Luas, and Dublin Bus, creating a truly connected public transport network.

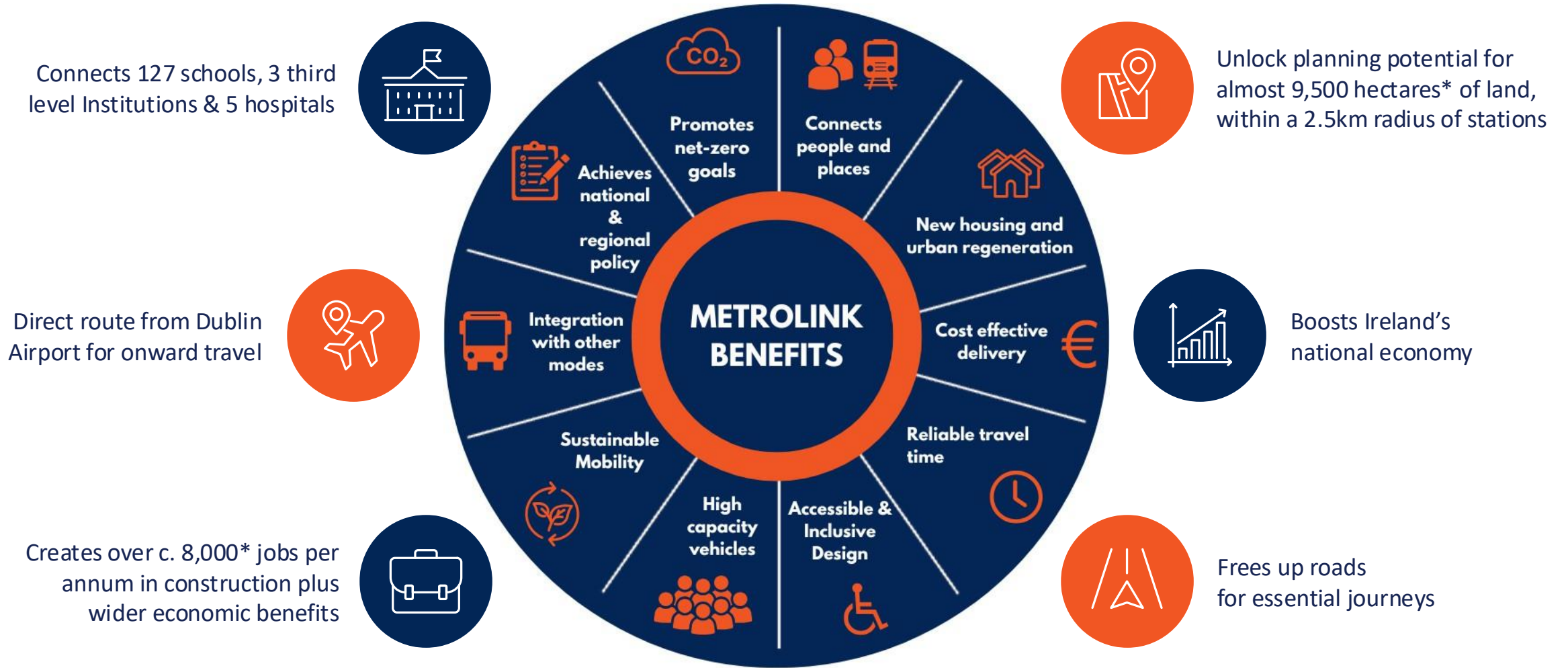
MetroLink will be fully electrified, carbon-neutral, and driverless, offering fast and reliable service with trains every 3 minutes during peak times. By 2060, this could increase to every 90 seconds. The system will carry up to 20,000 passengers per hour in each direction and is expected to serve up to 53 million passengers annually.

Much of the route will run underground, ensuring minimal disruption to road traffic and pedestrians. With its "Access for All" design, MetroLink will provide inclusive, modern transport for Ireland's future.





Benefits of MetroLink



»»» For more information, visit: [About MetroLink](#)

* Cumulative from opening year to 2050, depending on the potential future growth scenario.



MetroLink's Design Principles



Sustainable

Reduce traffic, improve air quality, catalyst for regeneration, low carbon



Efficient

Functional and elegant engineering solutions



People Focused

Inclusive, accessible and enjoyable to use by all



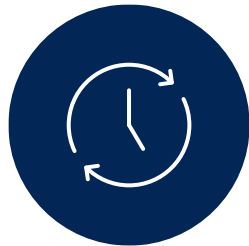
Safe and Secure

Clear sightlines, natural surveillance, robust materials



Legible

Consistent identity, intuitive, uncluttered, clear information zoning



Timeless

Future proof, robust & long life materials, easy to maintain & operate



Sense of Place

Responsive and sensitive to the City and local context/character



Value for Money

Standardisation, economies of scale, quality of common design



Health, Safety & Wellbeing

MetroLink's safety culture is founded on a Target Zero principle, aiming to prevent all injuries through proactive risk management and ongoing attention to safety in daily operations. This ensures everyone goes home safe every day.

Continuous Improvement is supported by regularly reviewing safety practices and learning from incidents to strengthen procedures and adapt to changing needs.

Clear Direction is provided through strong leadership and clear policies. Safety programmes meet national standards, and confidential reporting encourages transparency and accountability.

MetroLink also promotes Wellbeing and Positive Culture, supporting mental health and fostering a safe, inclusive environment through outreach and collaboration.

We expect the whole supply chain to actively support MetroLink's safety culture by embedding safe practices into their own operations. Working together, we can ensure that safety remains a shared priority at every stage of delivery.



Target Zero



Continual Improvement



Clear Direction



Well-being



Positive



What are we buying?

M100 Enabling Works Programme:

MetroLink’s Enabling Works Programme involves early site preparation through a suite of framework agreements and qualification systems. These works aim to remove risks such as utilities, archaeology, heritage assets, and existing structures before main construction begins, as well as provide enabling heavy civils works elements.

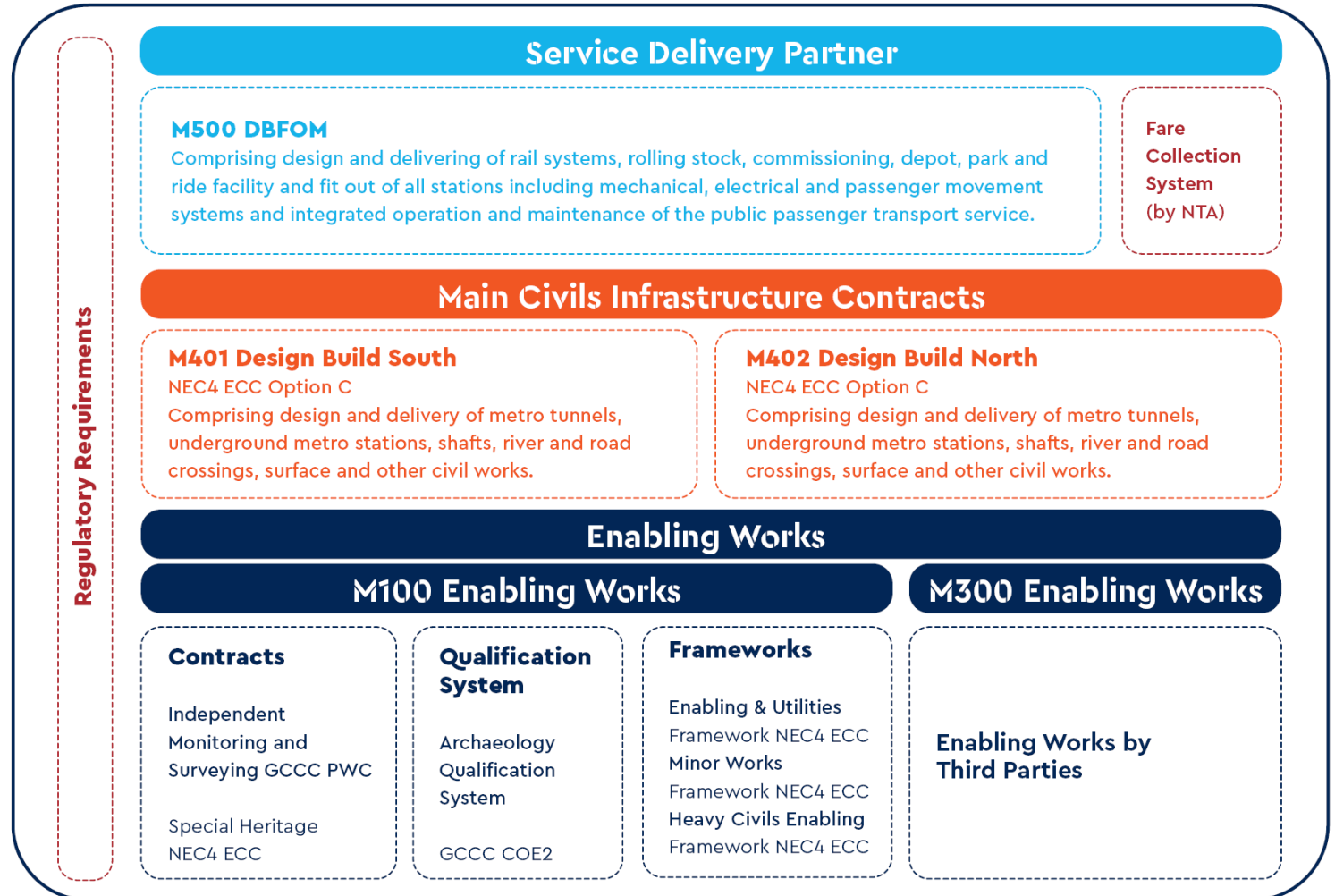
M401/M402 Main Civils Infrastructure Contracts:

The MetroLink programme includes two NEC4 ECC contracts covering the design and delivery of metro tunnels, station box structures, and other civil works. These packages will be of interest to large international construction companies or consortia.

M500 Contract:

The M500 contract will be delivered via a DBFOM model (Design, Build, Finance, Operate, Maintain) who will be responsible for:

- Designing and delivering rail systems, station fit-out, rolling stock, and depot facilities
- Commissioning and integrating the railway into service
- Operating and maintaining the public transport service
- Financing the works





When are we buying? M100 Contracts

MetroLink recognises the importance of providing clear and reliable information on the M100 procurement process. To ensure the procurement schedule reflects the most accurate timelines, we are currently completing an internal assurance review. As a result, the procurement schedule is being updated, and we expect to share the revised, more detailed dates, by **Mid March 2026**. At this point in time, the indicative dates we can provide are:

M14 Utilities & Enabling Framework	Contract Notice: PQQ	30th March – 10th April*
Archaeology QS	Contract Notice: QS	Q3 2025
M160 Environmental Monitoring (1st Contract)	Contract Notice: PQQ	Q2 2026
M190 Specialist Heritage	Contract Notice: PQQ	Q2 2026
M20 Minor Works Framework	Contract Notice: PQQ	Q2 2026
M120 Heavy Civils Enabling Works Framework	Contract Notice: PQQ	Q2 2026

*Additional dates, e.g. PQQ due date and ITT dates will be provided within the Contract Notice.



When are we buying? M400 & M500 Contracts





Approach to Packages – M400 & M500 Contracts

Reference Design

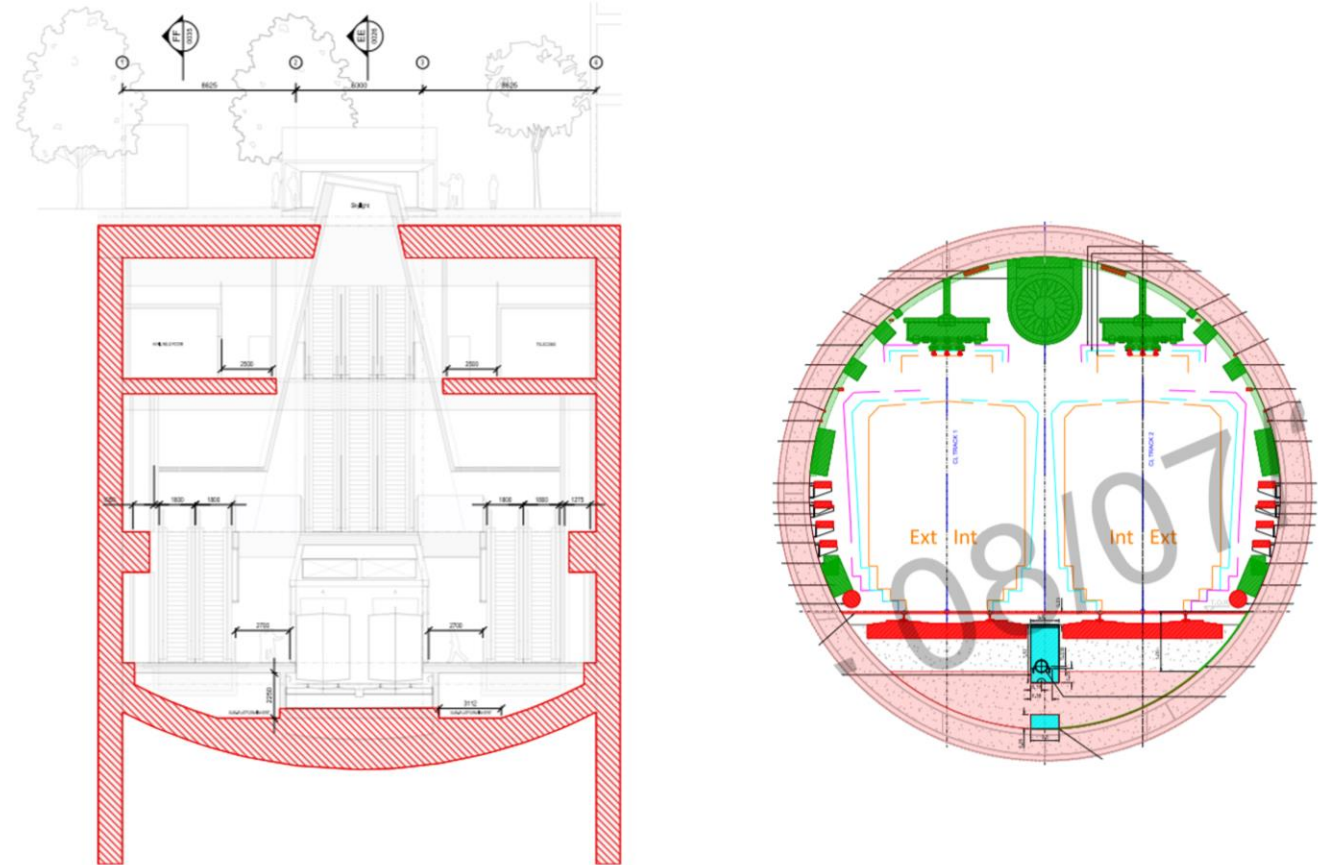
MetroLink has undertaken a space-proofing reference design for M400 and M500 elements. Details of this will be provided in the M400 and M500 tender documents.

Package Interface

Requirements for the design of the M400 elements are derived from the assumptions established for the M500 package. In the graphic shown to the right, the components highlighted in red represent the M400 scope, while all remaining elements fall under M500. The M400 elements form the heavy civils primary structure, creating the space for the M500 contractor to complete and integrate their systems.

MetroLink will not prescribe specific design methodologies, this is down to the contractors to decide.

M400 uses NEC contracts as a mechanism to manage change.



M400 (red highlight) and M500 Elements – Indicative Tunnel Cross Section
Not To Scale: For reference only



How are we buying?

MetroLink is introducing a Balanced Scorecard to guide supplier selection and performance across the programme.

This tool reflects our strategic priorities, highlighting areas such as social responsibility, environmental sustainability, innovation, and long-term public value.

It provides a clear framework to support alignment between contractor proposals and the outcomes MetroLink is working to achieve.

We encourage all prospective contractors to use the scorecard as a reference when preparing tender responses.

METROLINK'S BALANCED SCORECARD WHAT IS IMPORTANT TO US?

OUR VISION

MetroLink will make Dublin a more liveable and sustainable city with reliable, affordable, integrated public transport that will support the economy, and help Ireland meet its climate change targets.

OUR MISSION

To provide a metro which supports a growing population and the resulting housing demand whilst maintaining and protecting the economic efficiency of Swords, Dublin Airport and Dublin City centre corridor.

SOCIAL

Promoting Health

Great Relationships

Great Networks

Skills & Knowledge

Equality & Diversity

A Good Neighbour

ENVIRONMENTAL

Minimising Waste

Sourcing Responsibly

Carbon Reduction

Managing Water

Reducing Impacts

Land Use & Development

Promoting Biodiversity

ECONOMIC

Employment

Deliver Innovation

Work Smart

Work Together

Plan for Future

Resilience



Our Commercial Approach

MetroLink's commercial approach is fair, open and transparent, ensuring all stakeholders are treated equitably and with integrity. Clear communication and consistent practices help build trust and confidence.

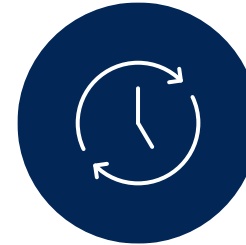
We strive for efficient processes that simplify commercial activity and reduce complexity, enabling quicker decisions and smoother collaboration.

MetroLink aims to be easy to do business with, offering straightforward procedures and responsive teams. It removes barriers to engagement and supports long-term partnerships.

By combining fairness, efficiency and openness, MetroLink creates a commercial environment that encourages collaboration and shared success.



**Fair, open and
transparent**



Efficient processes



**Easy to do
business with**



MetroLink's eSourcing Portal Streamlining Procurement

MetroLink is pleased to announce the launch of its **eSourcing Portal**, a central system designed to simplify and modernise the procurement process.

This portal will serve as the main hub for managing **direct procurement (Tier 1) opportunities with MetroLink**, including Pre-Qualification Questionnaires (PQQs) and Invitations to Tender (ITTs).

The eSourcing Portal has been introduced to make it easier for suppliers to access opportunities, submit responses efficiently, and stay informed about upcoming tenders.

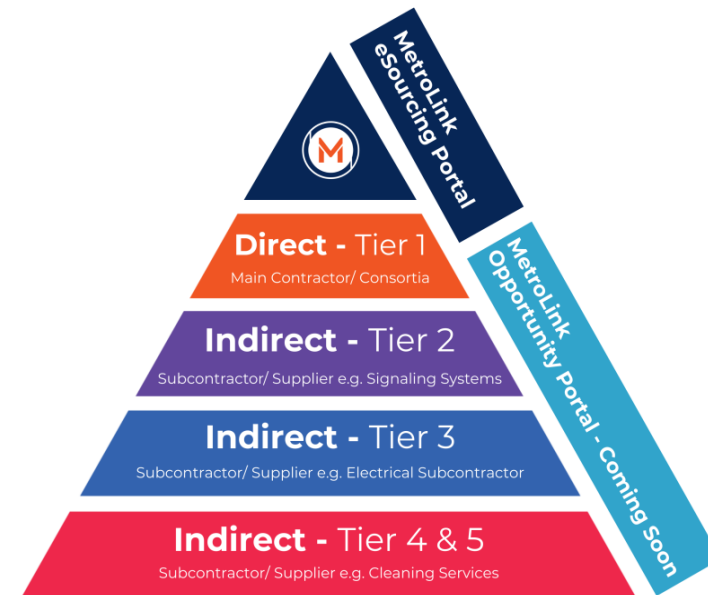
Prior Information Notices (PINs), Contract Notices and Contract Award Notices will continue to be published via eTenders as required by law. They will include a link to the eSourcing Portal for the PQQ and ITT documents.



For more information, visit:
[MetroLink eSourcing Portal](#)

Registration Details:

- **Required**
All suppliers must register on the eSourcing Portal to participate in direct procurement opportunities.
- **Quick and free**
Registration takes about 10 minutes and costs nothing.
- **Information needed**
Basic company details, contact info, and compliance documentation.



MetroLink eSourcing Portal and Opportunity Portal
Direct and Indirect Procurement with MetroLink



Opportunity Portal Maximising Opportunities for SMEs

In line with government policy, MetroLink is committed to creating an environment which engages SMEs and is clear about how SMEs can gain access to MetroLink's Supply Chain.

Visibility of the Procurement Pipeline:

MetroLink and its Supply Chain are committed to publishing information on the procurement pipeline, live procurements and details of tender awards. We will also publish guidelines to ensure that SMEs are aware of what we expect of our contractors.

Contract Requirements:

The majority of the opportunities available to SMEs will be made available indirectly through our Tier 1 contractors and their supply chains. They will be required to publish opportunities on our online portal [1].

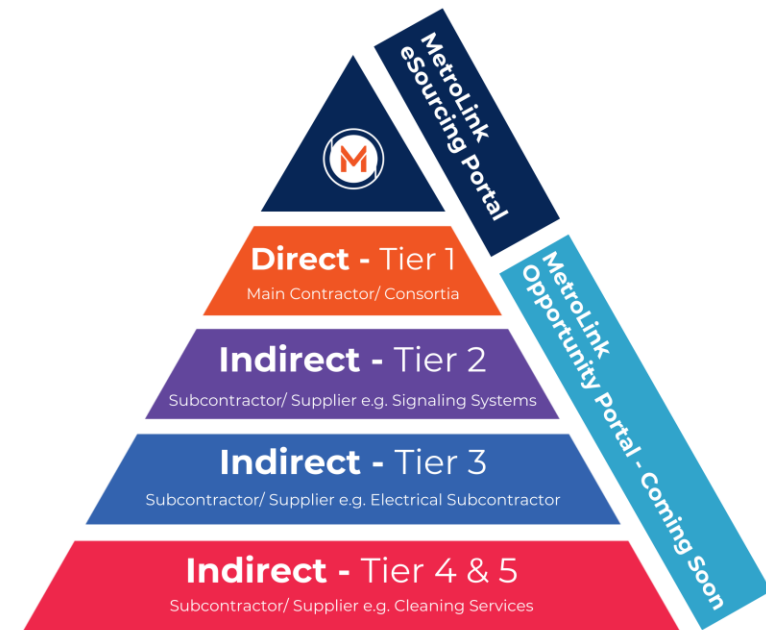
Supplier Engagement:

MetroLink and its Tier 1 Contractors will engage with the wider supply chain using Events. We will also work with relevant trade associations and business networks to highlight contract opportunities and provide a clear route to accessing them.

[1] Details of the approach will be published in 2026.

Why two portals?

- The eSourcing Portal is for direct procurement with MetroLink (i.e Tier 1 contracts).
- The Opportunity Portal helps Tier 1 suppliers share subcontracting opportunities (Tier 2 and below) and lets SMEs create profiles, search work packages, and network. This improves visibility and access across the supply chain.



MetroLink eSourcing Portal and Opportunity Portal
Direct and Indirect Procurement with MetroLink



What can you do next?

Register



Register on **MetroLink eSourcing Portal** for Direct Contracts with MetroLink

[MetroLink eSourcing Portal](#)

Register



Register on **MetroLink Opportunity Portal** for opportunities within the Supply Chain

[Coming 2026](#)

Monitor



Tenders Electronic Daily (**TED**) Platform eTenders Platform

[Tenders Electronic Daily eTenders](#)

Visit



Supply Chain Page on MetroLink.ie

[Supply Chain Page](#)

Email



Contact the Supply Chain Team


[supplychain@metrolink@tii.ie](mailto:supplychain@metrolink.tii.ie)




METROLINK

 supplychainmetrolink@tii.ie

 www.metrolink.ie

 **Freephone:** 1800 333 777
Mon-Fri, 8.30am-5.30pm

 **MetroLink**
Transport Infrastructure Ireland
Parkgate Business Centre
Parkgate Street
Dublin 8
D08 DK10

 [MetroLink LinkedIn](#)