

METROLINK

Integrated Transport. Integrated Life.



MetroLink Advance Works Market Consultation

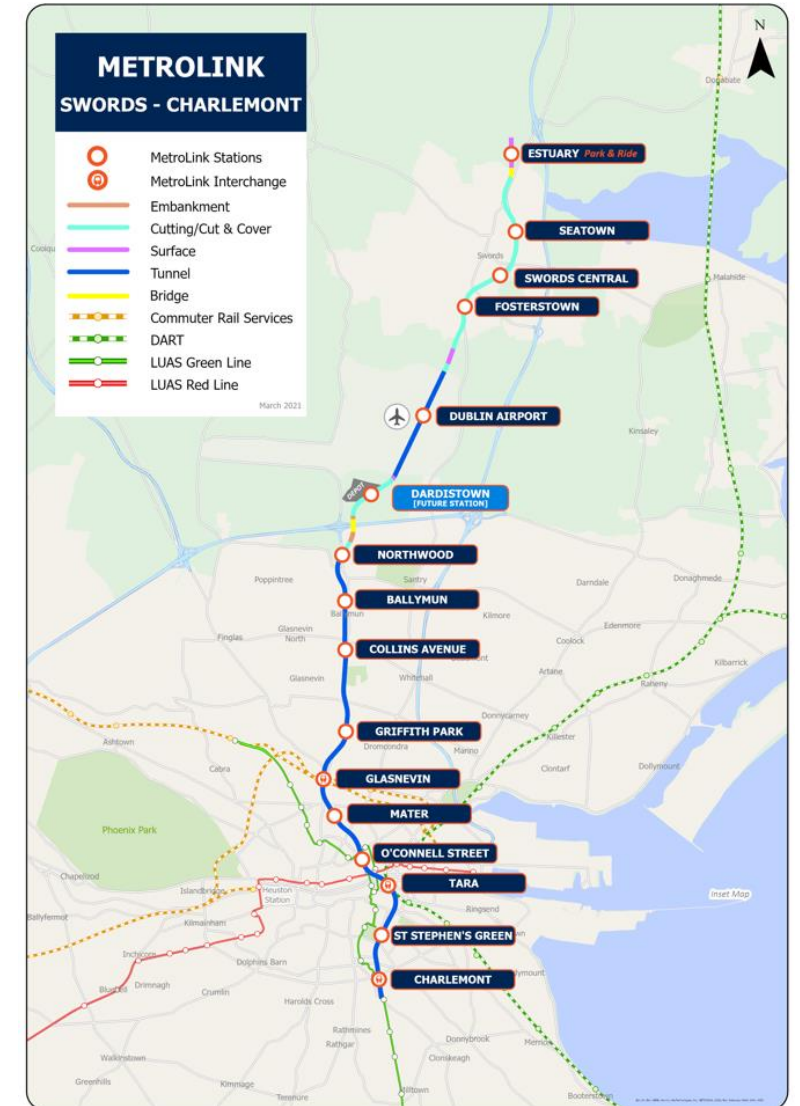
22nd November 2023

Agenda



AGENDA

Introduction and Welcome	14:30 – 14:35
Project Overview	14:35 – 14:45
Advance Works Scope	14:45 – 15:05
Procurement Strategy and Process	15:05 – 15:10
Metrolink Approach	15:10 – 15:15
Conclusion	15:15 – 15:20
Questions and Answers	15:20 – 15:30



Introductions

METROLINK
Integrated Transport. Integrated Life.



Catherine Sturgeon

Project Manager AWDS,
Transport Infrastructure
Ireland



Michael Noonan

Transportation
Director, RPS
AtkinsRéalis RPS
Package Manager



Rónán Swan

Head of Archaeology,
Transport
Infrastructure Ireland



Paul Hennessy

Technical Director,
AtkinsRéalis
AWDS Project Manager for
AtkinsRéalis RPS

Scheme Description



Details



16
Stations



19 km
Route Length

Timeline

2023

Detailed Design
Current Stage

2024

Procurement
Next Stage

TBC +8-10 yrs
Passenger Operation

Benefits

- High-frequency
- High-capacity system
- Caters for 20,000 passengers per direction per hour
- Up to 50 million passengers per annum
- Low journey time 25 mins Swords to City Centre
- Services Dublin Airport
- Fully integrated with bus, light rail, DART and Irish Rail
- 3,000 space park & ride
- Active travel improvements
- Low emissions transport system
- Supports economic development and compact growth
- Regeneration opportunities



METROLINK

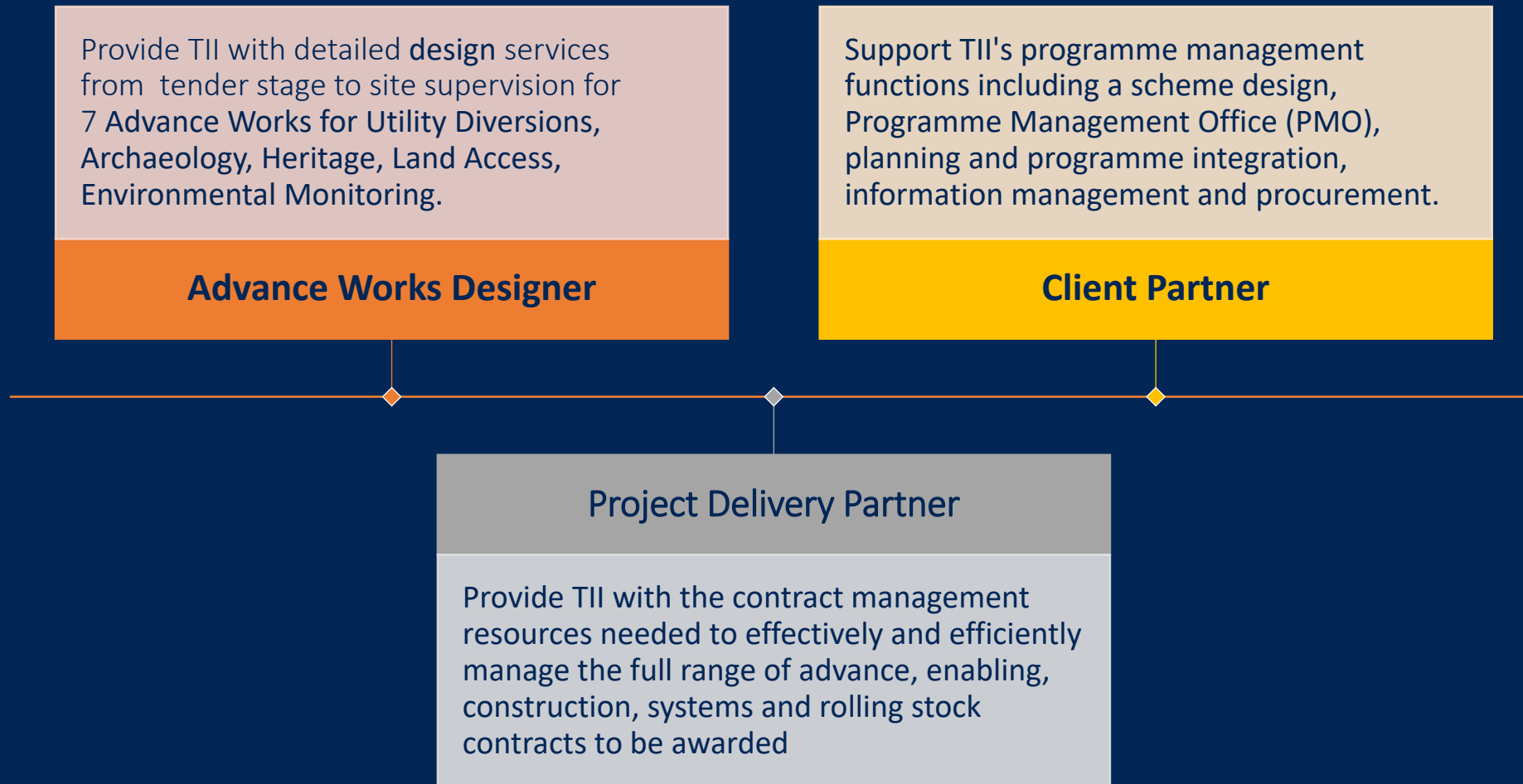
www.metrolink.ie

Digital Environmental Statement ([here](#))

Video Gallery ([here](#))

www.metrolinkro.ie

The Client Organisation



MetroLink Overview



Advance Works Contract Packages

Northern section: M403

Northern section: M150

Central section: M402

Central & Southern section: M140

Southern section: M401

Utility Diversions;

Land Access & Demolition: M110

Heritage: M120

Archaeology: M130

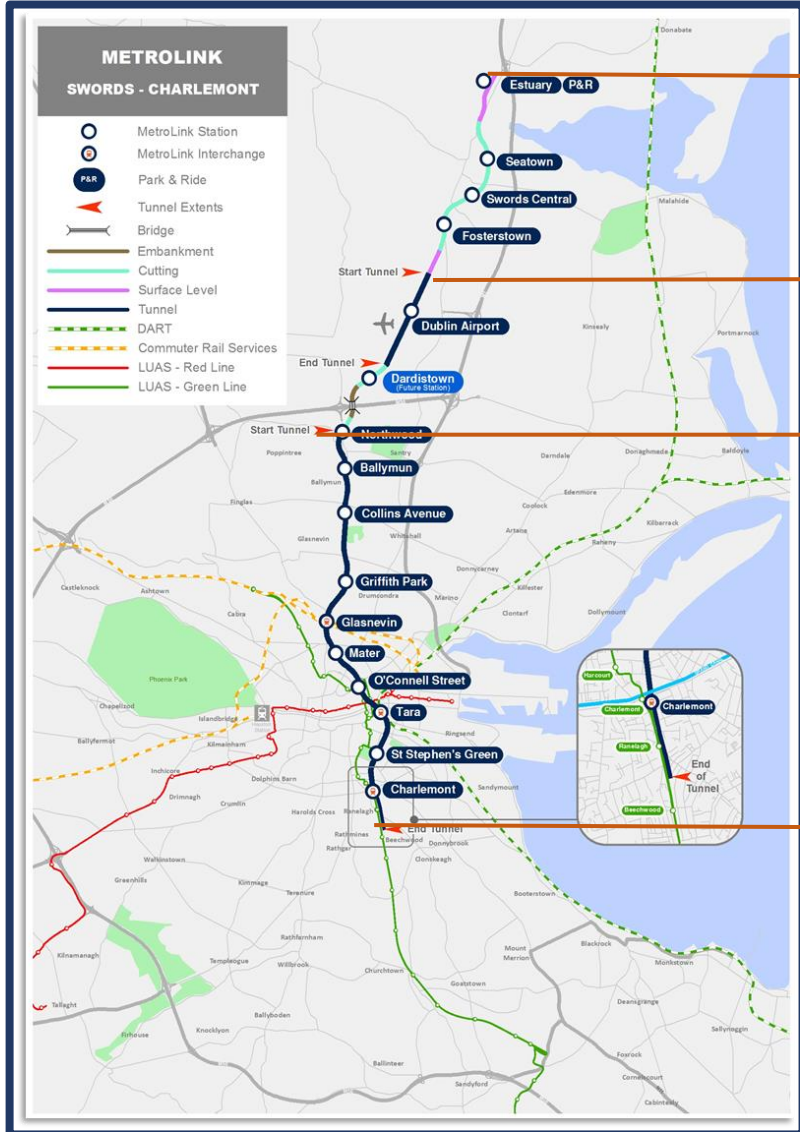
Environmental Monitoring: M160

Utility Protection Works: M170

Site Specific

Line Wide

MetroLink Overview



Advance Works Contract Packages

4 Core Contract Packages

Northern section: M150

Utility Diversions;

Central & Southern section: M140

Utility Diversions;

Land Access & Demolition: M110

Archaeology: M130

Heritage: M120

Environmental Monitoring M160:

Utility Protection Works M170

Northern section: M403

Surface cut + cut-and-cover sections; Broadmeadow viaduct; 4 stations;

Central section: M402

Tunnel and station under airport; depot + future station box; M50 overbridge

Southern section: M401

Tunnel, evacuation shafts and 10 stations under city

Service Delivery Partner PPP: M500

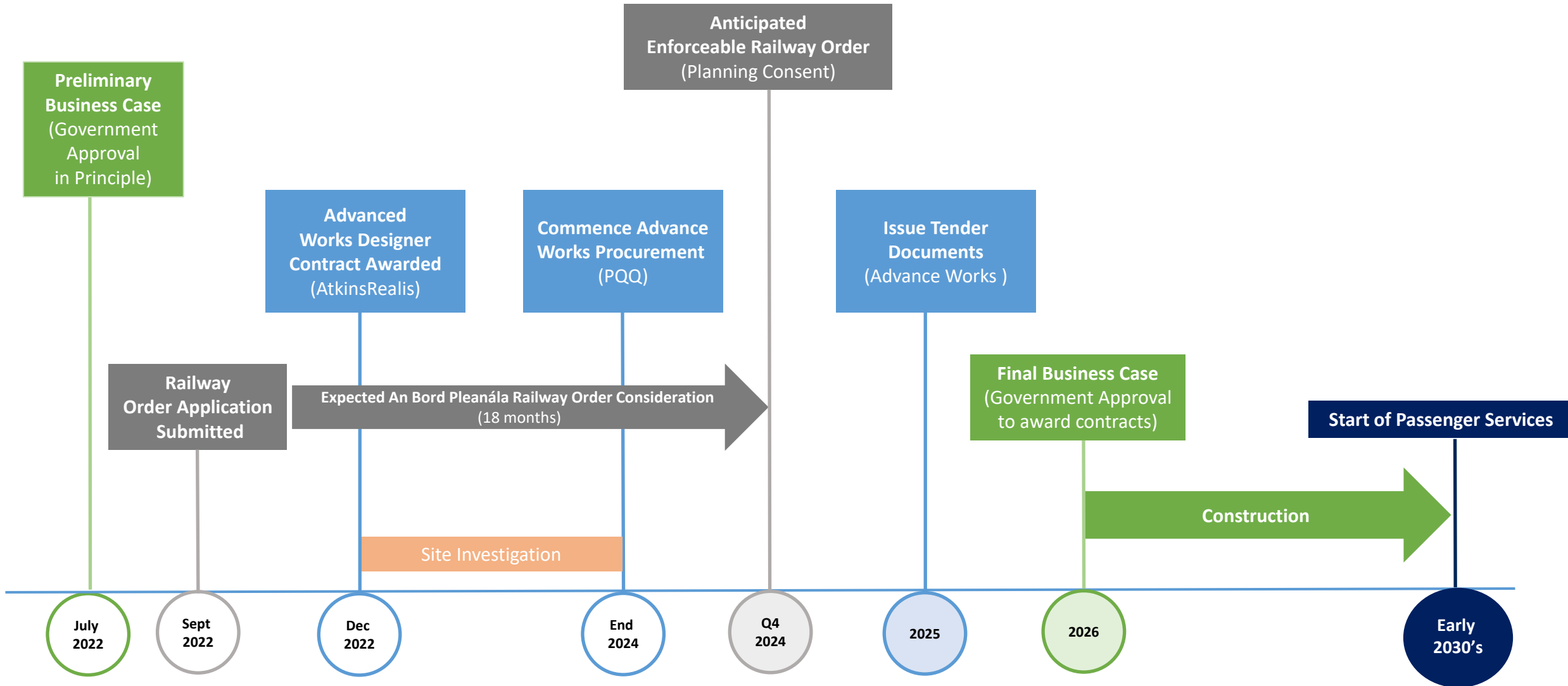
- Design, build and finance the metro system; line-wide systems, P+R at terminus and supporting infrastructure
- Metro Operator
- Asset Manger

Other Contract Packages

Enabling Works: series M300

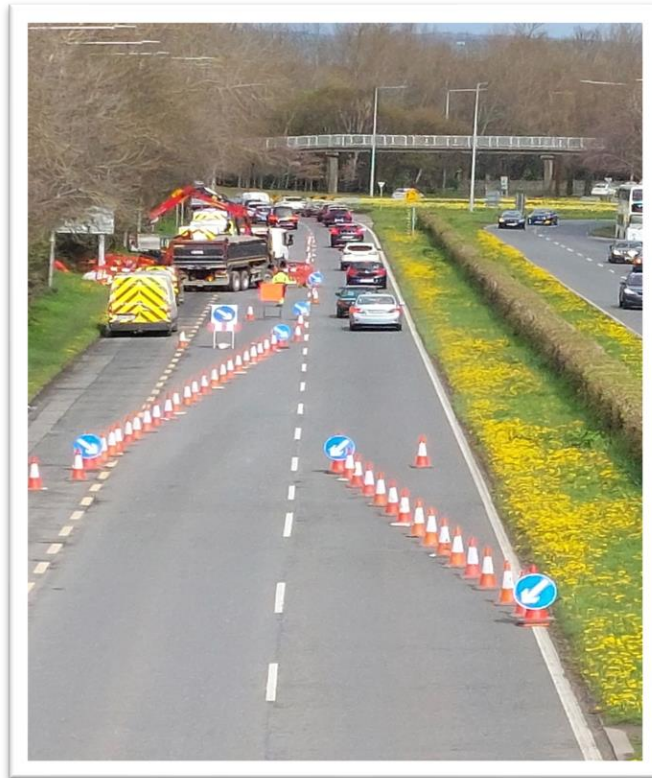
Discrete works performed by third parties
ESBN HV & MV connections

Programme





Site Investigations



Design Services



*Project Conservation
Architect*



*Advance Works
Designer*



METROLINK



Advance Works Scope

M110: Land Access Works



- Access to the Sites
- High Quality Boundary Treatment
- Tree Management Plans
- Ongoing Security
- Interfaces



Photomontage Tara Street

M110: Structures, Land Access, Vegetation Clearance



Structures/Demolition

- Buildings and Structures Demolition
 - 29 Buildings to be demolished
- Demolition of Footbridges
 - 4 footbridges to be demolished
- Timelines



Building Old Ballymun Road



Footbridges R132



Footbridges R132



Footbridges R132

M110: Site Clearance and Vegetation Clearance



- Pre-commencement surveys required
- Invasive Alien Species Management (IAPS)
- Vegetation Clearance
- Tree Felling
- Strip out
- Removal of ancillary structures

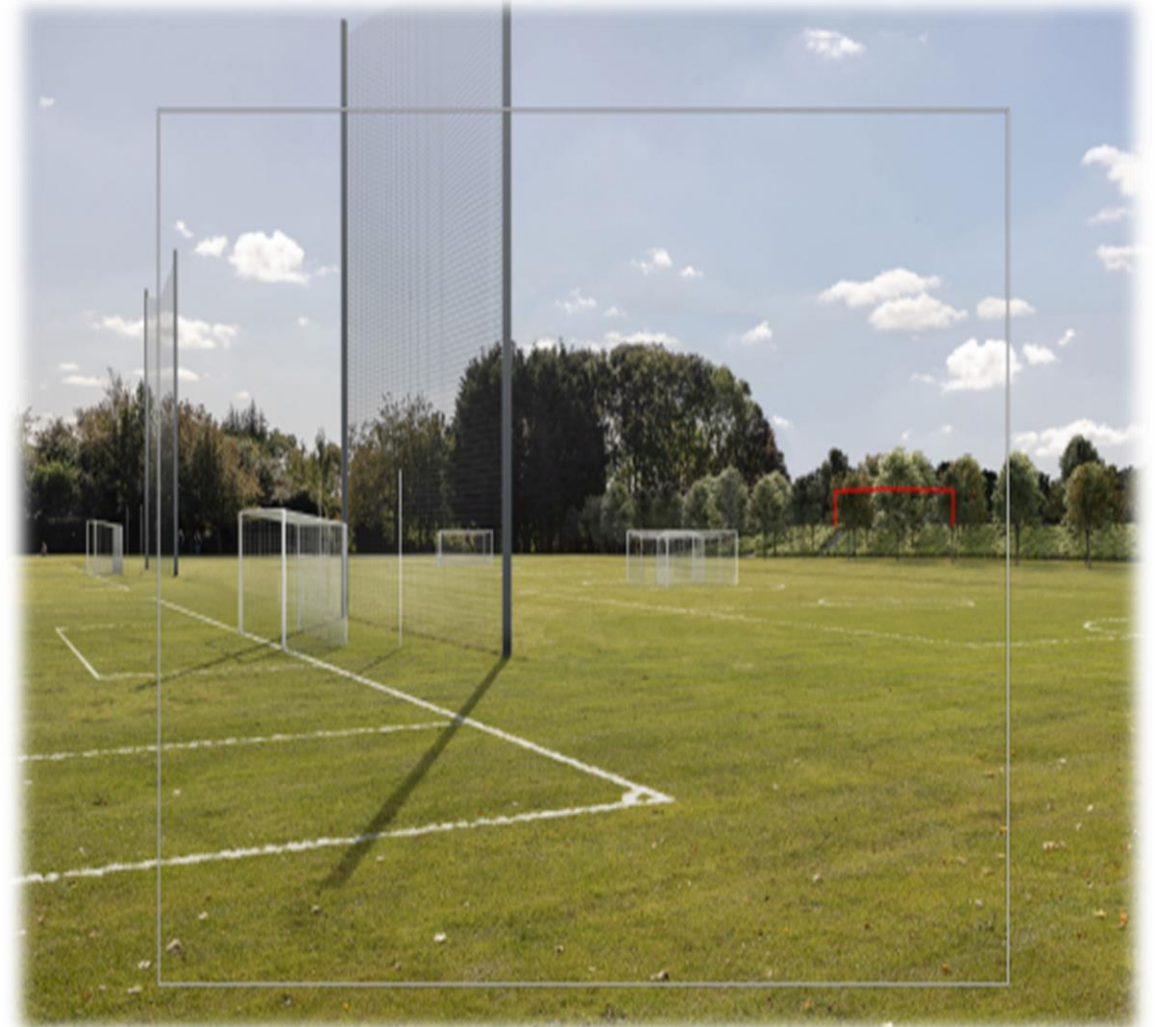


Typical Vegetation Clearance

M110: Playing Pitch Modifications



- Local relocation or amendment to soccer and GAA pitches, including two new all-weather pitches.
- Playing pitches affected at 5 locations.
- Specialist pitch contractors required



Photomontage of playing pitches at Albert College Park

M120: Heritage Works



*Four Masters Cross,
Mater Park*



*Countess Marckievicz Statue,
Townsend Street*

Street Furniture Examples Glasnevin



- Collaboration with Alastair Coey Architects (Project Conservation Architect)

Works Stages

- Protect In Situ
- Remove from site
- Storage Facility
- Restore
- Reinststate

M120 Contract Heritage - Scope



Items include

- street furniture
- paving/kerbstones
- railings,
- walls,
- statues,
- art installations,
- post boxes and
- coalhole covers.



Railings at Mater Station



Dedicatory stone, St Joseph's Church at Mater



Example of Historical Lamp Standard



Healing Hands Sculpture, Mater Park

- Conservation specialists required

Archaeology Scope (M130 and other advance contracts)

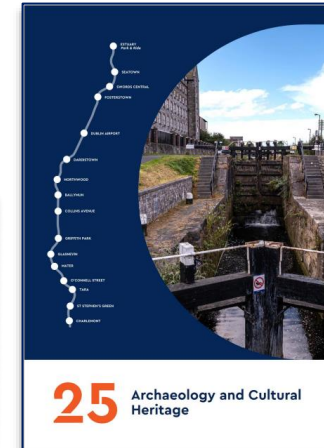
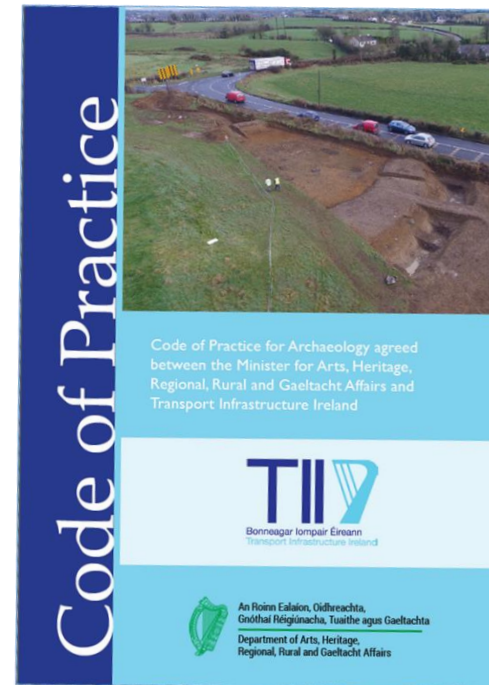


To comply with **Code of Practice for Archaeology** [link](#) as agreed with Minister (2017)

- Investigation, excavation, post-excavation analysis, dissemination and publication
- works to be done under **Section 26 licence** or **Ministerial Consent**, pending implementation of **Historic and Archaeological Heritage Act**

TII Guidelines [link](#)

- Zooarchaeological sampling guidelines
- Palaeo-environmental guidelines
- Notes for Authors, Editors and Contributors in TII Heritage Series
- *TII C14 and Bayesian Analysis (expected Q2 2024)*
- *TII Communicating Archaeology (expected Q2 2024)*



Archaeological Reports online



- MetroNorth
- MetroWest
- Luas schemes

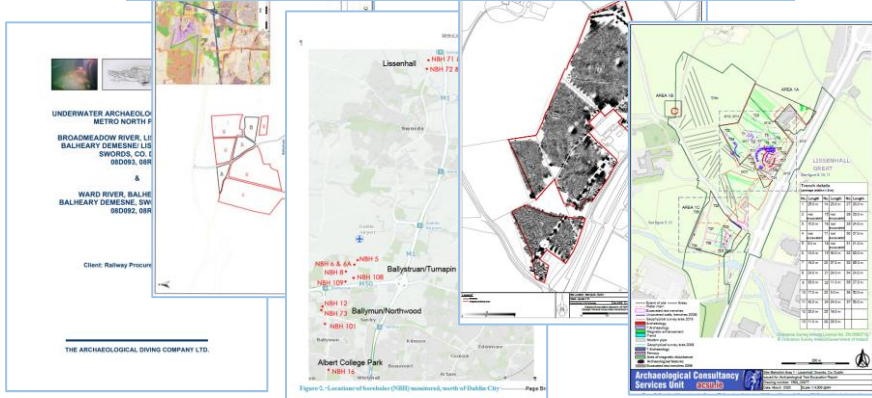


- Luas Cross City

M130 TII Approach (Greenfield)



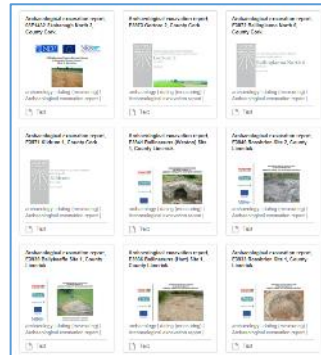
Previous Surveys/Investigations



Stage i.



Stage ii.



Stage iv.



Stage iii.

Stages to be concurrent (subject to information available)



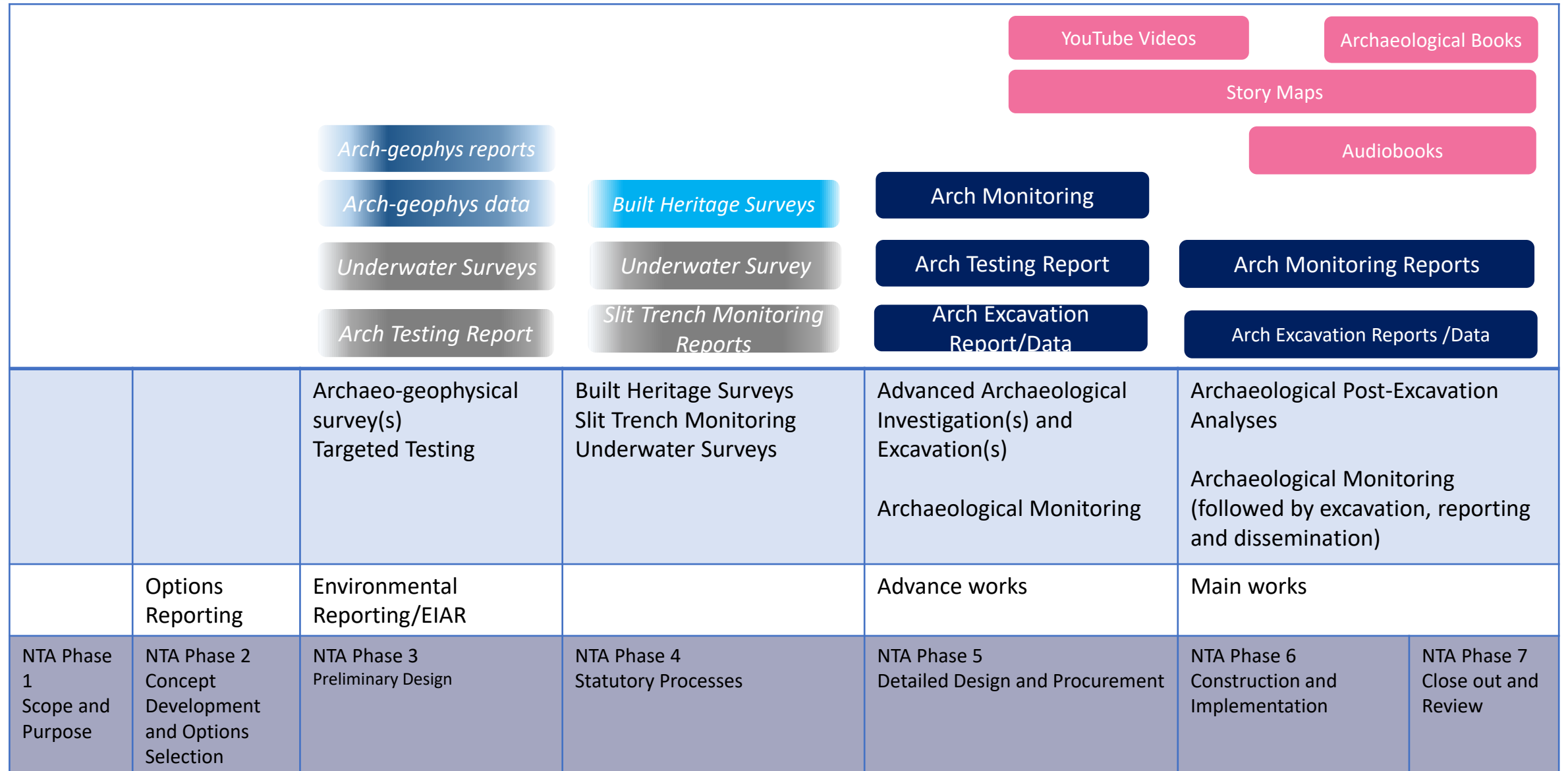
TII approach urban (M130 and other advance contracts)

- Dynamic working environment
- Desktop Research
- Take advantage of other surveys
 - Geotechnical Investigations
 - Utility Slit Trenches
 - GPR
 - Building Surveys
 - Street Furniture Surveys
- Complete advance works where possible under relevant contracts –
- Land access (Cellars/Demolition), Utility, Heritage etc
 - Archaeological testing and monitoring
 - Excavation, Reporting and Dissemination

Photos of MetroLink and LCC works



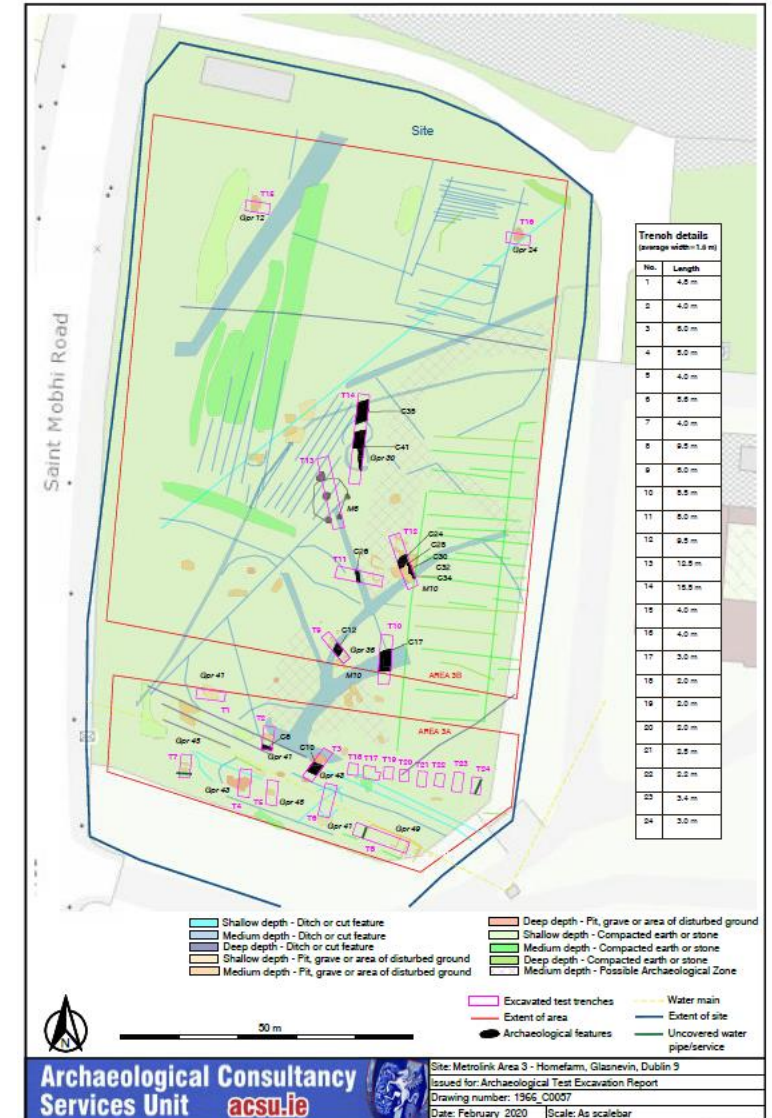
M130 and other advanced works contracts - outputs by phase



M130 Stage i. to iv. contracts



Griffith Park Station



(95.4%)

538 - 645 cal AD

(1412 - 1305 cal BP)

M140 & M150 Utilities



Northern section: M403

Northern section: M150

Utility Diversions;

Central section: M402

Central & Southern section: M140

Southern section: M401

Utility Diversions;

Site Specific

M140 & M150 Utilities



The type of utilities impacted by MetroLink include:

Utility Approximate length of diversions / quantities (m)

Communications Ducts (1x100mm duct)	6,985m
HV Electricity	750m
MV/LV Electricity	7,630m
Gas MP/LP	2,380m
Water Main <300mm	1,590m
Water Main >300mm	2,338m
Foul Water <600mm	1,680m
Foul Water >600mm	290m
Surface Water <600mm	5,755m
Surface Water >600mm	620m



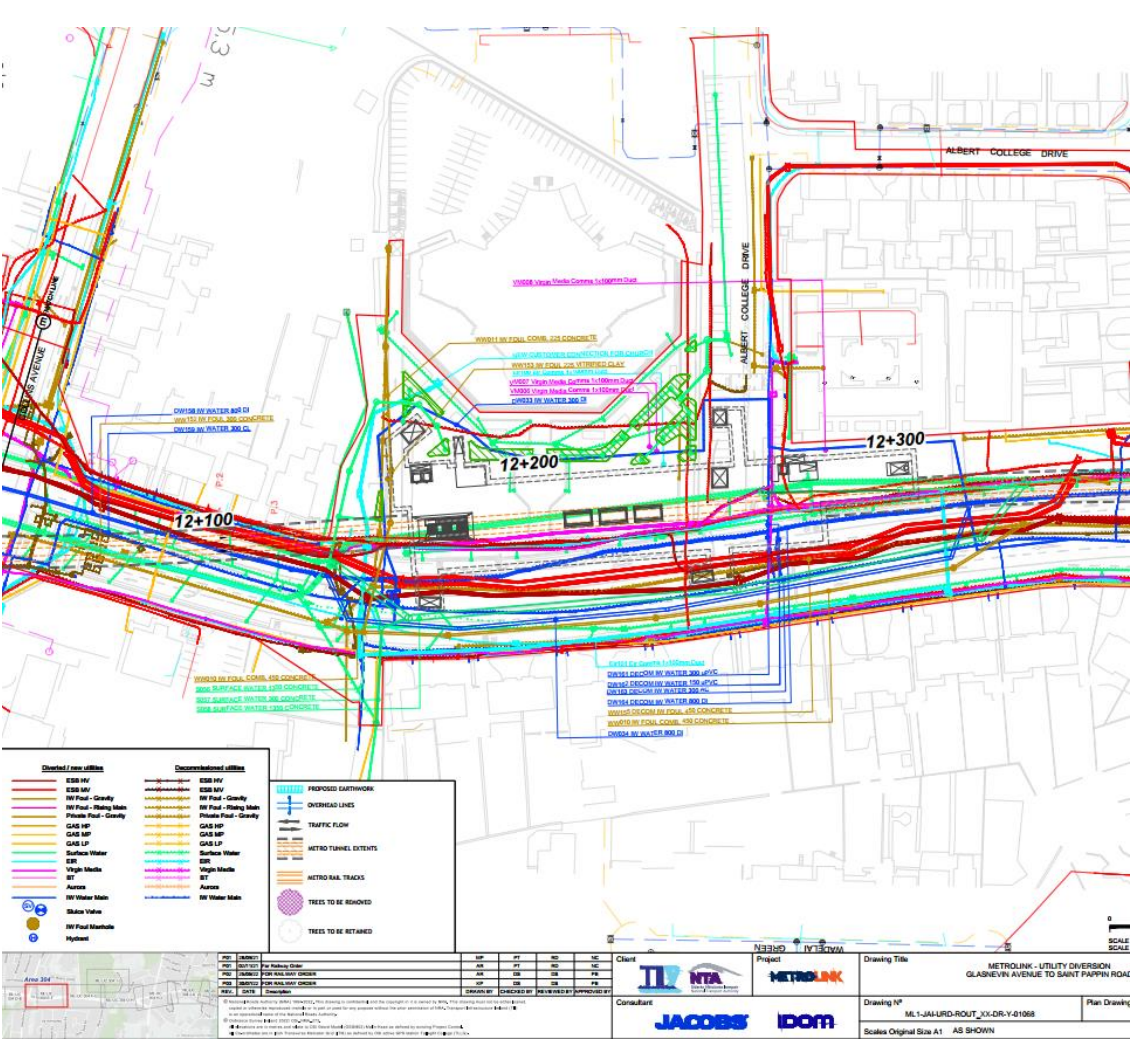
22

Infrastructure and Utilities

M140 – Central and Southern Section



Typical Sections Collins Avenue



Utility Diversions Collins Avenue

M150 Northern Section - Typical Cross Sections along R132

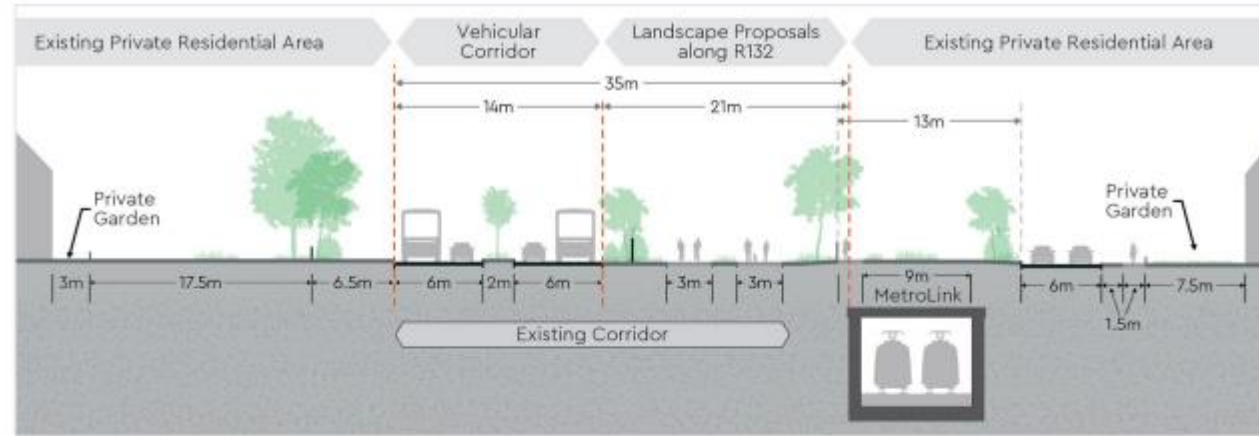


Diagram 4.37: Illustrative Cross Section of the R132 and the Railway in Retained Cut between Seatown and Swords Central

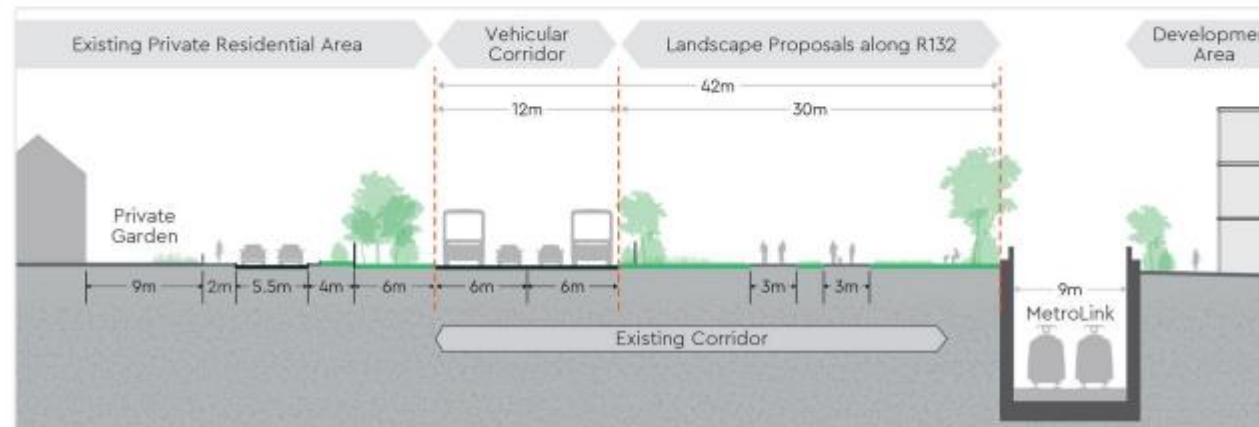


Diagram 4.38: Illustrative Cross Section of the R132 and the Railway in Retained Cut between Swords Central and Fosterstown

M150 – Northern Section



- New Swords Pump Station
- HDD Directional Drilling 710mm pipe in Balheary Park
- Linear Diversions along Cut & Cover
- Interfaces with R132 Connectivity Project and Bus Connects



Seatown Pump Station Location



Substation to be moved at Airside Retail Park



- Traffic Management
- NEC4 Contract
- Archaeological monitoring and excavations contracts to be included
- UAO and local authority engagement

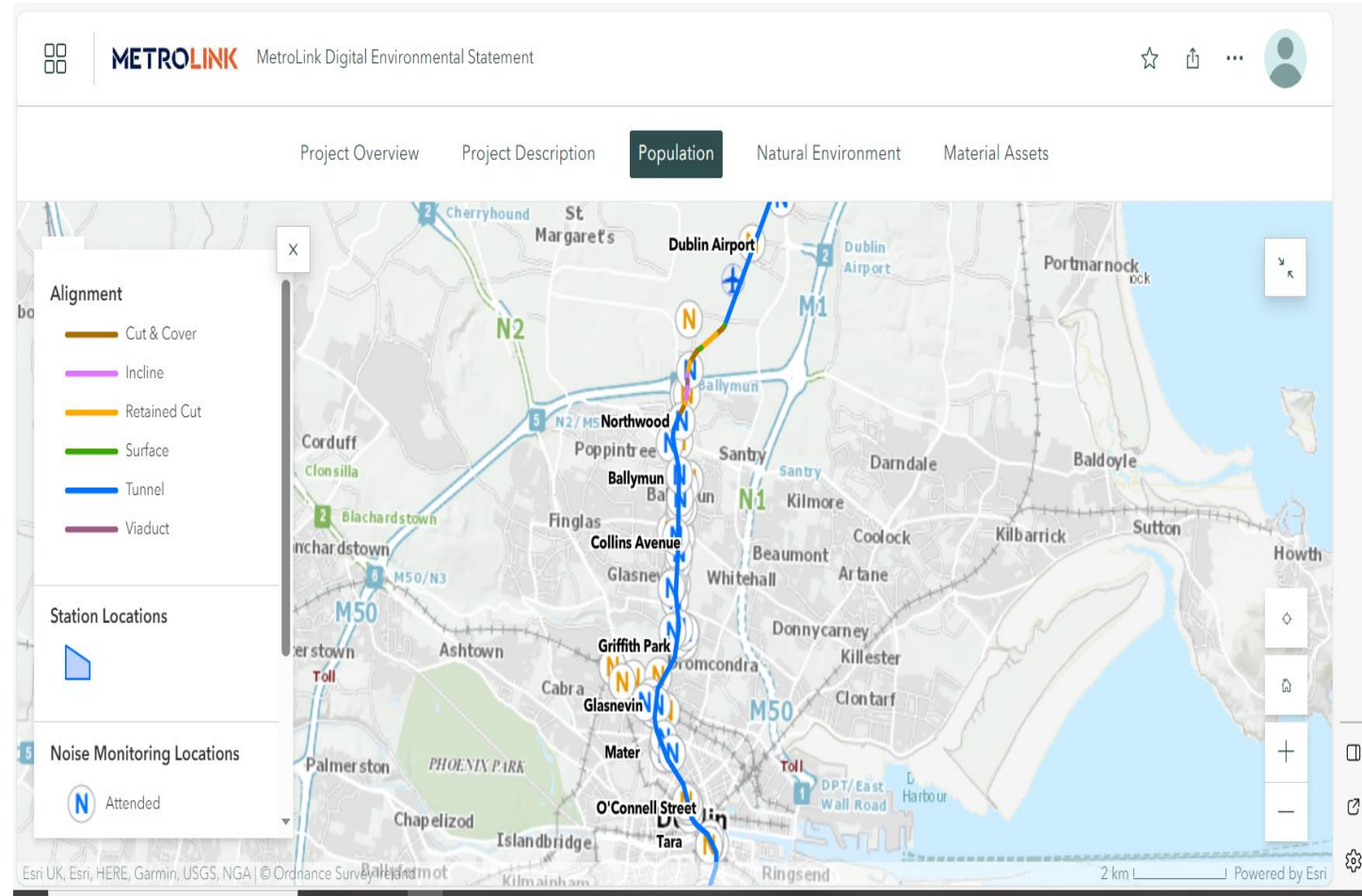
Utility Asset Owners (UAOs)

DCC	FCC
EIR	GNI
eNEt	Uisce Éireann
ESB	BT
EIRGRID	Vantage Towers
Virgin Media	Private
DAA	Vodafone

M160 - Environmental Monitoring Systems (EMS)



- Independent Monitoring system
- Noise and Vibration
- Air Quality
- Surface water and Groundwater
- Stakeholder engagement
- Contractor monitoring also required
- [MetroLink Digital Environmental Statement \(arcgis.com\)](https://arcgis.com)



EIAR noise monitor locations (source Digital Environmental Statement)

M170 Utility Protection Works



- Settlement
 - Advance works mitigations
 - Main works mitigations
- Sewers, water mains and transmission considered for relining and monitoring
- UAO Engagement ongoing



METROLINK



Procurement Strategy and Process

Procurement Strategy and Process

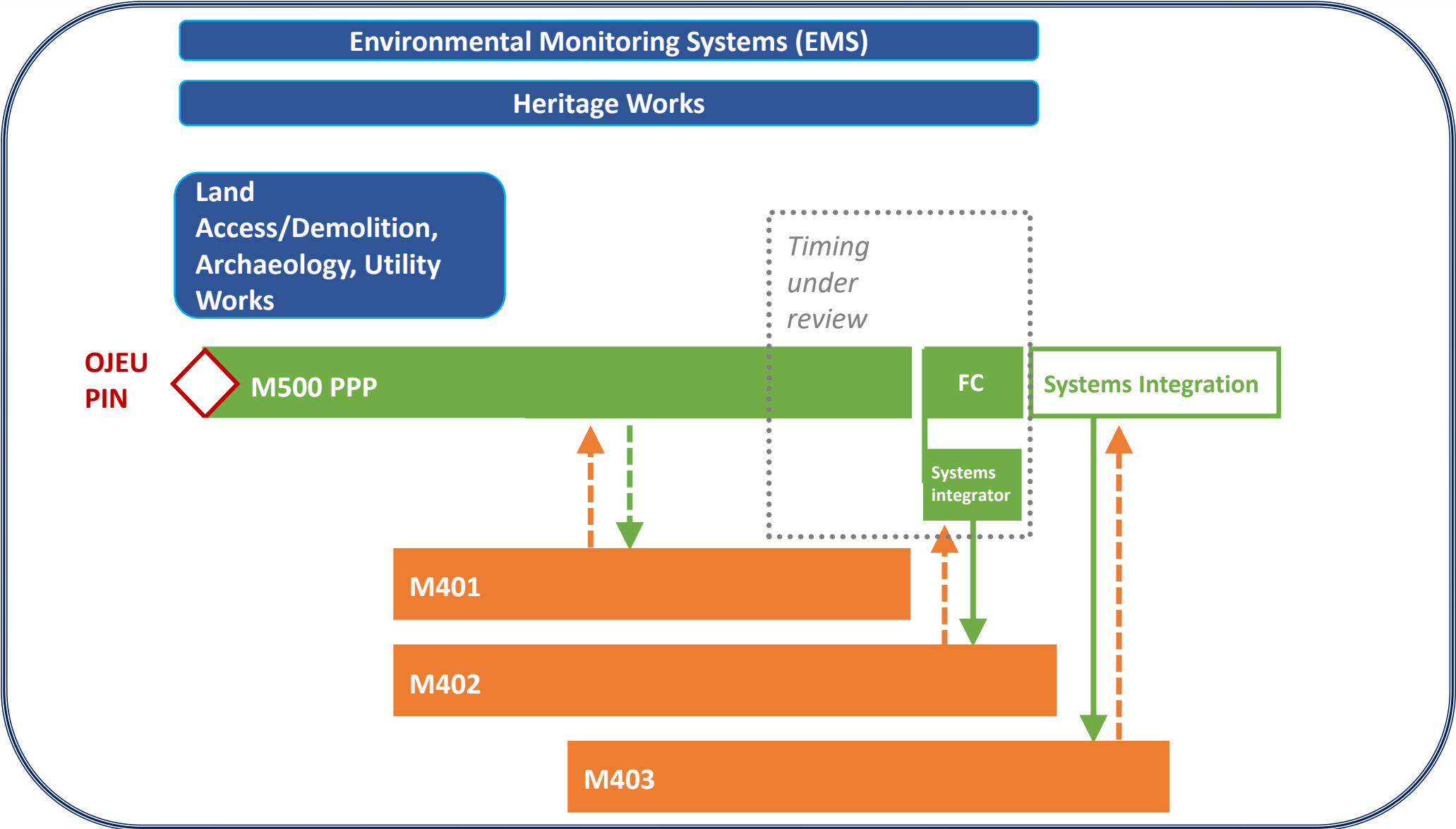


Procurement Stages – Indicative Timelines

Stages	Forecast Date
Stage 1: Information Memorandum and Pre-Qualification Questionnaire (IMPQQ)	Prior to Enforceable Railway Order
Stage 2: Invitation to Tender issued to shortlisted tenderers	1 month after Enforceable Railway Order
Construction	4 years duration

- Public Procurement Process
- Notifications issued via eTenders and OJEU

Indicative Contract Timelines





Employer Designed Contracts

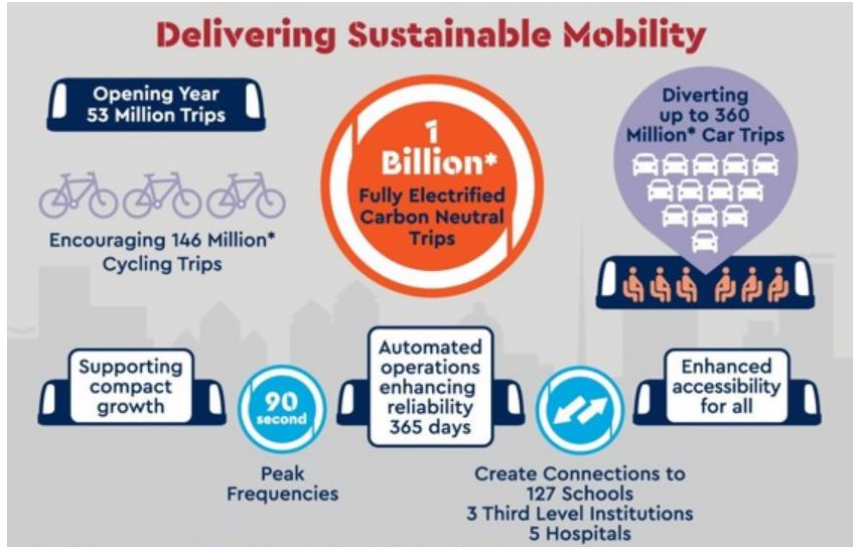
Form of Contract	Work Package
NEC4	M110 Land Access, Site Clearance and Demolition M140 Utilities Central and Southern Package M150 Utilities Northern Package M170 Utility Protection Works
GCCC	M120 Heritage M130 Archaeology M160 Environmental Monitoring Systems

METROLINK



MetroLink Approach

MetroLink Approach



- Collaboration
- Enabling tools
 - Contract Management Platforms
 - Common Data Environment

- Sustainability
- Stakeholder engagement



ProjectWise



AssetWise

METROLINK

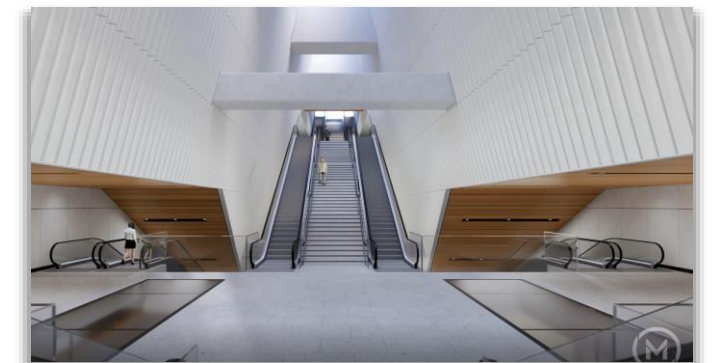


Conclusion

Conclusion



- TII is looking for experienced Contractors to deliver the MetroLink Advance Works contracts:
 - Site Clearance, Demolition and Land Access
 - 15.4km of Electricity & Communication Ducts
 - 12.3km Water/Foul/Surface Water Diversions at stations
 - 2.38km Foul Diversions route wide
 - Archaeology Resolution
 - Heritage Specialists
 - Environmental Monitoring
- All procurement updates are uploaded to the MetroLink website [Procurement](#)



Conclusion



MetroLink delivers

- Integrated transport system
- Climate change targets
- Sustainable City

Next steps

- Provide feedback
- Request 1-2-1s
- Prepare for procurement to start 2024

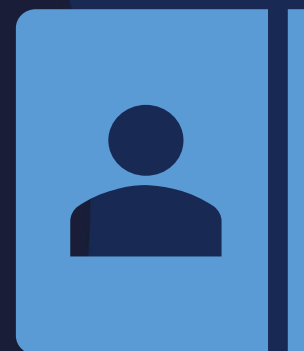
Next Steps



Closing date for Questionnaires

15th DECEMBER 2023

METROLINK
Integrated Transport. Integrated Life.



1 – 2 – 1's complete by

END JANUARY 2024